

TRDC Climate and Sustainability Impact Assessment

This toolkit is a self-assessment to help officers think about how their policies, project commissioning and services can align with Three Rivers' Climate Emergency and Sustainability supports report authors to draft the environmental implications section on decision reports.

How to use the tool

The self-assessment is intended to help officers reflect critically on their project or service as a reflective tool, not a framework for approving or rejecting a decision, so it will work best if considered honestly and carefully.

We envision this tool will be used early in the design of a project/policy/procurement where environmental harms can be mitigated, and environmental benefits enhanced. If you have any questions, please discuss with your Head of Service, and contact the Climate and Sustainability Team. Once you are happy that your proposal is optimised, then complete this form, and add it to your decision report (committee/synopsis report) where applicable.

The next tab presents a set of questions about the proposal on a range of sustainability issues, which are colour-coded to indicate its environmental impact as below:

Colour code	Recommendation
Dark green (4)	Strong positive impacts for sustainability. Recommendation to proceed.
Light green (3)	Some positive impact for sustainability. Recommendation to proceed with caution.
Yellow (2)	Some negative impacts for sustainability. Recommendation to revise proposal.
Red (1)	Considerable inconsistency with the council's sustainability objectives. Recommendation to reject proposal.
Grey (0)	Neutral or not applicable. Recommendation to consider how to proceed.

Once you've selected your answer in the "Impact" column (C), then give the relevant score. Higher scores indicate more sustainable proposals.

These questions should be considered for services, goods and projects we procure directly. Delivery models, specifications and tender evaluation should be shaped to be aligned with our sustainability and net-zero commitments.

Against each area, the assessment presents prompts to highlight best practice suggestions of how negative impacts could be lessened on a project.

This assessment was inspired by Jim Cunningham at Hammersmith and Fulham

Version

Date

nt

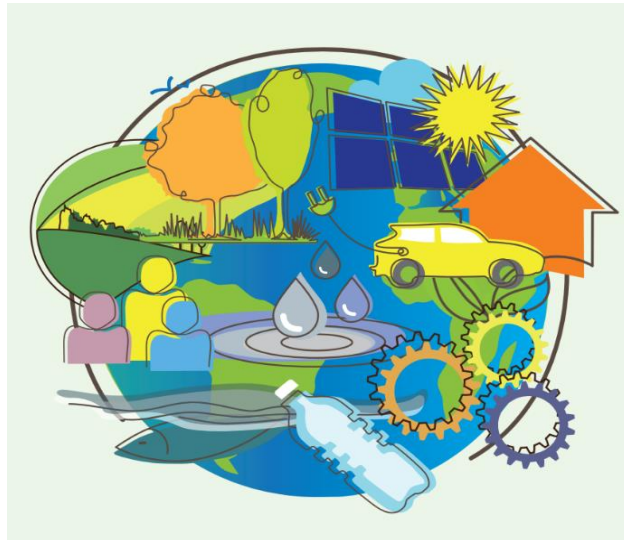
ts, procurements,
ustainability Strategy. It also
ports, and procurement strategy

ervice's environmental impact. . It
rk best if each question is

to identify areas where
would like advice, please
if necessary.

opy the results in each section in

ility criteria. Each answer is



**THREE RIVERS
DISTRICT COUNCIL**

proceed as is with this aspect.

ther enhance this aspect where possible and proceed.

ew these aspects and find mitigations where possible.

ectives. Strong recommendation to review these aspects and find mitigations.

enefits could be achieved in this area, but otherwise proceed.

score in the "Score" column (E).

as well as those we deliver
ensure our contractors are

estions and enable consideration

im Council and developed by officers of Three Rivers Distrcit Council.